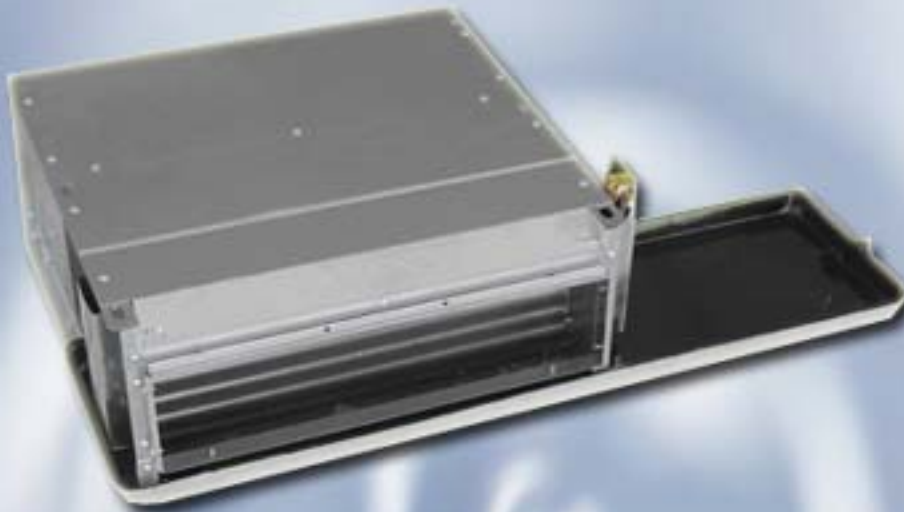




PDW(L4) - VW SERIES

2-PIPE DUCTED FAN COILS



Standard Features:

Cooling Capacities From 1.7 to 12 kW in 9 sizes

12/30/50/70 Pa external static pressure

4 row coil

Left and Right-side connections

Compact and Extra Low Noise Designs

Options:

Electric Heater

LCD Wall Pad Thermostat

Electronic PCB

2-way or 3-way Motorized Valve Kit



2 PIPE DUCTED FAN COIL UNITS - 4 Rows

STANDARD SPECIFICATIONS

PDW(L4) - VW SERIES

Model			PDW(L4)-06-VW	PDW(L4)-09-VW	PDW(L4)-15-VW	PDW(L4)-18-VW	PDW(L4)-20-VW	PDW(L4)-27-VW	PDW(L4)-36-VW	PDW(L4)-40-VW	PDW(L4)-44-VW	
Air Flow	H	m ³ / h	340	510	680	850	1020	1360	1700	2040	2380	
	M		260	384	510	638	765	1020	1275	1530	1785	
	L		168	258	340	425	510	680	850	1020	1180	
Cooling Capacity	H	W	2000	3100	4300	5300	6000	7900	10700	12050	13000	
	M		1800	2700	3700	4700	4800	6300	8500	9340	10050	
	L		1700	2200	2300	3400	3400	4700	7200	6510	6960	
Sensible Cooling Capacity	H	W	1400	2100	3000	3700	4200	5100	6800	7610	8150	
	M		1300	1900	2600	3200	3300	4100	5600	6310	6770	
	L		1200	1500	1600	2300	2300	3000	4600	4750	5160	
Heating Capacity*	H	W	4100	6200	8300	10100	11200	14600	20700	22530	25000	
	M		3700	5400	6100	8800	9500	11500	16000	18220	20300	
	L		3300	4800	4400	6400	7200	8200	12400	13450	15020	
Heating Capacity**	H	W	2300	3400	4600	5600	6300	8600	10400	11900	13020	
	M		2100	3000	3400	4800	5000	6800	8900	9660	10650	
	L		1800	2600	2900	3500	4500	4900	7000	8000	9000	
Power Input (ESP 12Pa)	H	W	33	47	56	72	89	111	140	180	221	
Power Input (ESP 30Pa)	H	W	45	60	73	88	110	155	174	211	254	
Power Input (ESP 50Pa)	H	W	48	65	85	102	117	173	211	252	301	
Power Input (ESP 70Pa)	H	W	55	71	93	110	124	181	220	259	306	
Noise Level (ESP 12Pa)	H	dB (A)	37	39	41	43	45	46	48	50	52	
Noise Level (ESP 30Pa)	H	dB (A)	40	42	44	46	47	49	50	52	54	
Noise Level (ESP 50Pa)	H	dB (A)	42	44	46	48	50	52	54	56	58	
Noise Level (ESP 70Pa)	H	dB (A)	45	47	50	53	57	60	63	67	70	
Water Flow		m ³ / h	0.38	0.59	0.81	1.00	1.13	1.49	2.02	2.27	2.45	
Water Pressure Drop		kPa	3.3	6.8	15.0	23.0	36.0	14.0	25.0	39.0	42.0	
Electrical heater(optional)		KW	1	2	2	3	3	4	5	6	6	
Fan	Type	Centrifugal fan (forward-curved galvanized steel fan wheel)										
	Quantity	1	2	2	2	2	4	4	4	4	4	
Coil	Type	seamless copper tube mechanically bonded to aluminium fin										
	Testing Pressure	2.5Mpa										
	Internal Volume	L	0.95	1.15	1.35	1.55	1.74	2.54	2.73	3.01	3.25	
Motor	Type	split-capacitor motor with ball bearing										
	Quantity	1	1	1	1	1	2	2	2	2		
	Power Supply	V / Ph / Hz	220V / 1P/60HZ									
	Insulation Class	class B										
	Running Current*(ESP: 12Pa)	A	0.168	0.236	0.282	0.345	0.436	0.61	0.69	0.86	1.04	
	Running Current*(ESP: 30Pa)	A	0.22	0.29	0.35	0.42	0.53	0.74	0.83	1	1.22	
	Running Current*(ESP: 50Pa)	A	0.23	0.31	0.4	0.49	0.6	0.83	1	1.21	1.44	
Running Current*(ESP: 70Pa)	A	0.26	0.34	0.44	0.53	0.6	0.87	1.05	1.24	1.46		
Control Method	Three-Speed Switch, Thermostat or Electronic PCB											
Connection (Diameter)	Coil Conns	IN	Rc 3/4									
		OUT	Rc 3/4									
	Drain Pipe	R 3/4										
	Valve (2way or 3way)	R3/4										
Working Pressure	Mpa		1.6									
Connection Method	Socket											
Weight	kg		14.5	16.5	18.5	20	22	32.5	35.5	37	40	
Dimensions	L	mm	755	855	955	1055	1155	1555	1655	1855	1955	
	W		495	495	495	495	495	495	495	495	495	
	H		230	230	230	230	230	230	230	230	230	

09 V.1.0

Note:

Cooling Capacity: Entering air temp.27°C(DB),19.5°C(WB); Entering water temp. 7°C, Leaving water temp. 12°C

Heating Capacity*: Entering air temp. 20°C(DB); Entering water temp. 70°C, leaving water temp.60°C.

Heating Capacity**: Entering air temp. 20°C(DB); Entering water temp. 50°C, leaving water temp.40°C.

Air Flow: Under dry coil conditions, fan speed high. Pa airflow data excludes filter.



Sonkor International Limited

Head Office

Office 6, 9/F, Block A, New Trade Plaza, 6 On Ping Street, Shatin, N.T., Hong Kong

Tel : +852 26488887 Fax: +852 26366608 E-mail : sonkor@sonkor.com

WEBSITE: www.sonkor.com

Branch Office, Spain

AV. Juan Pablo II Nº25 2 4L, 30008-Murcia, Spain

Tel: +34 968270885 Fax: +34 968249520

E-mail : felipe@sonkor.com

Branch Office, China

Jinxin 19-305, Lucheng, Wenzhou, China

Tel: +86 577 88311691 Fax: +86 577 88311691

E-mail: margaret@sonkor.com